

IMPACT and ALIGNMENT with MPS 2020



City of Lakes AmeriCorps
Minneapolis Community Education

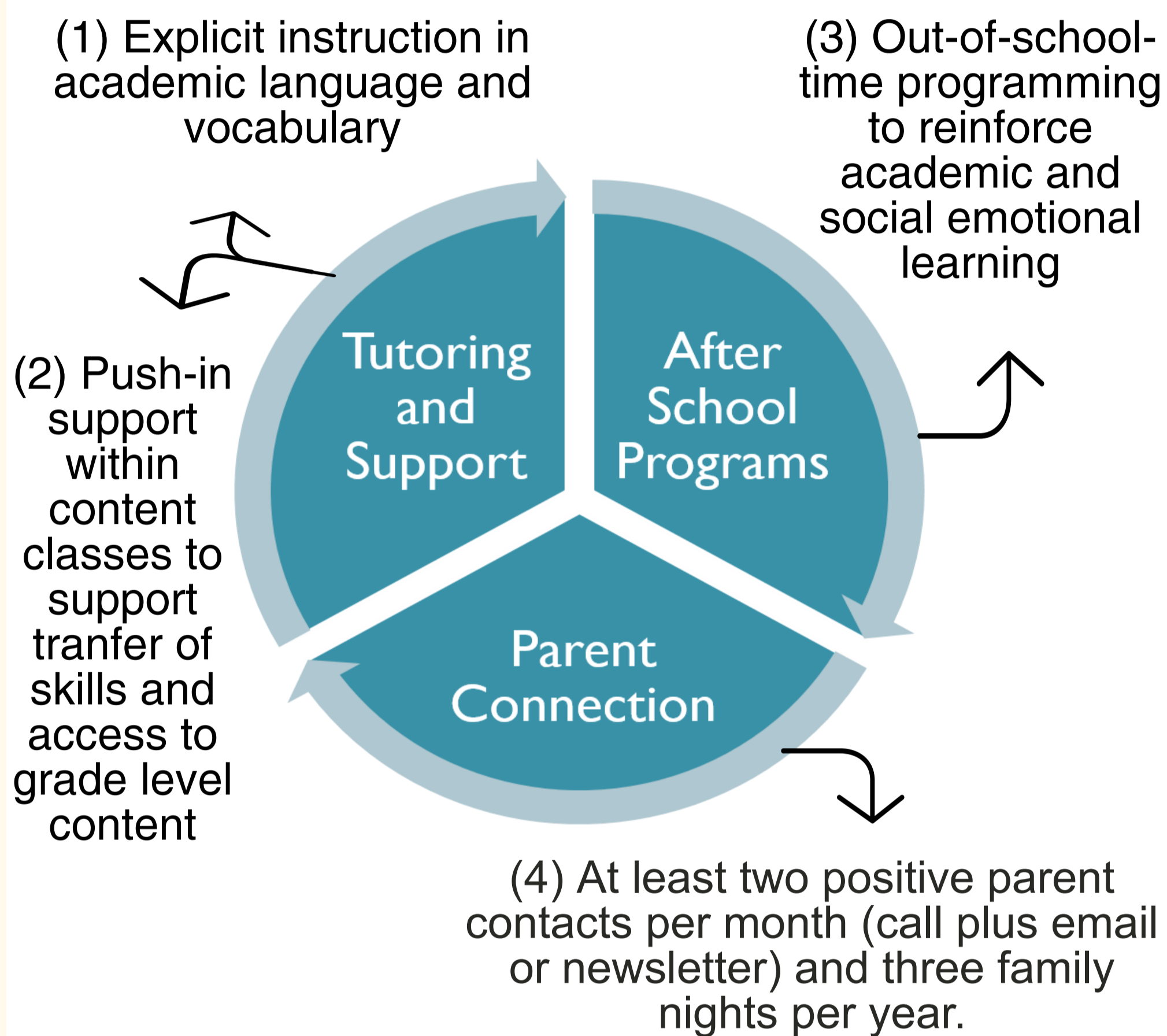
Contact Us

lisa.lambert@mpls.k12.mn.us

<http://col.mpls.k12.mn.us/>

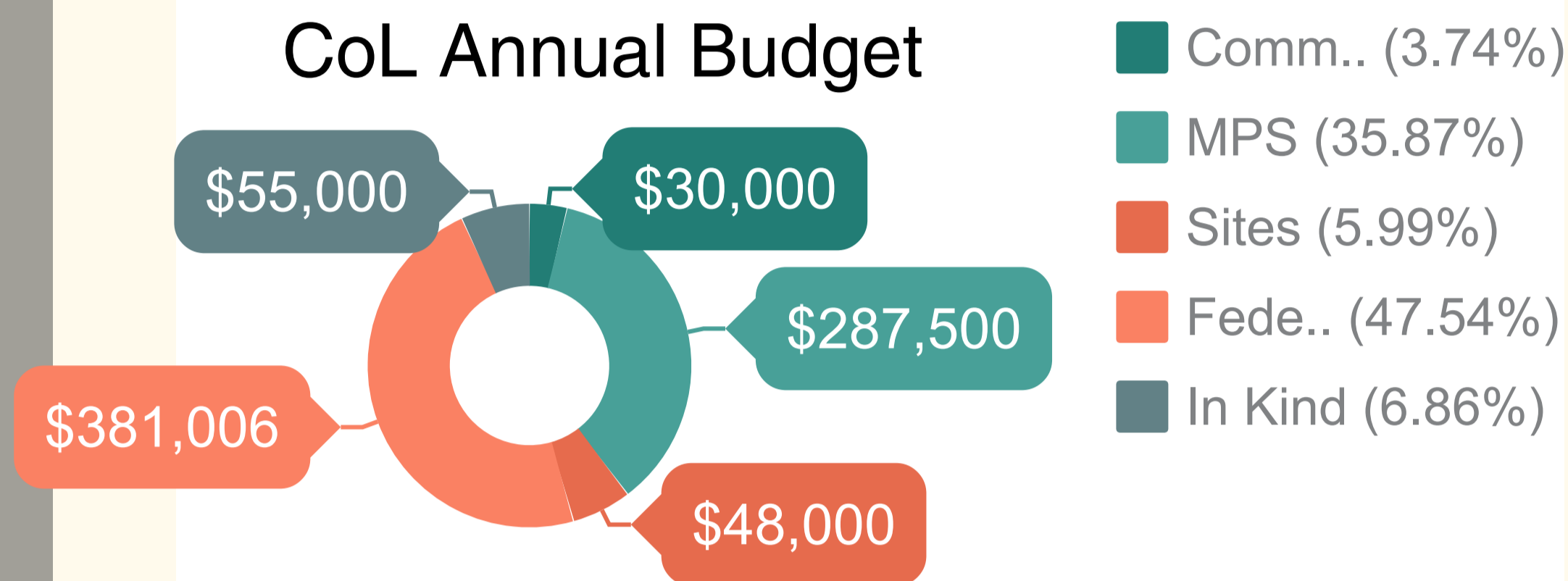
Summary of Service

Long-Term English Learners receive...



Return on Investment

CoL Annual Budget



25 full-time + 10 part-time members = a value of...

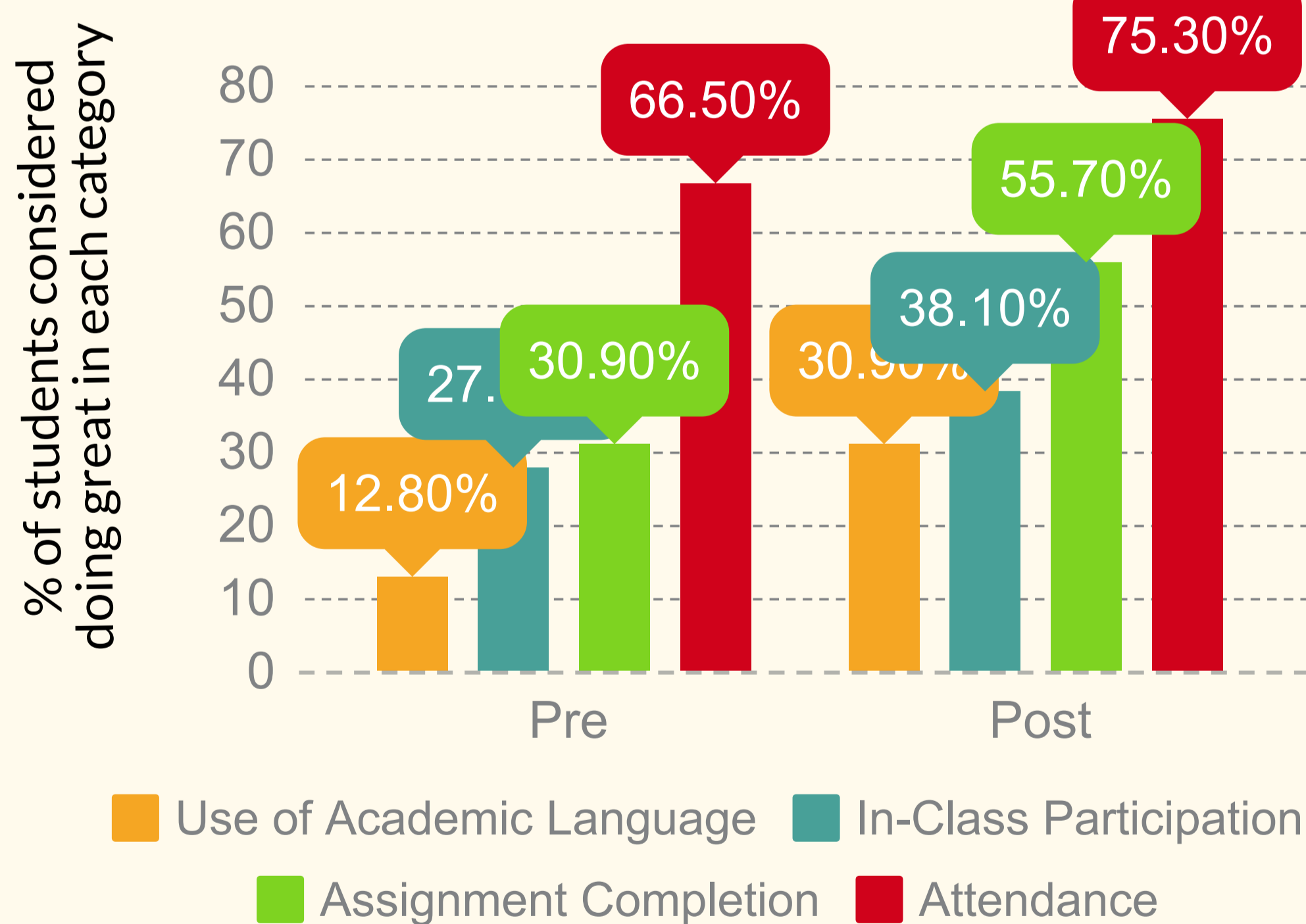
\$ 1, 2 7 8, 7 4 5

...brought into MPS by CoL members each year.

Based on dollar value of volunteer time in MN, from https://www.volunteeringinamerica.gov/pressroom/value_states.cfm

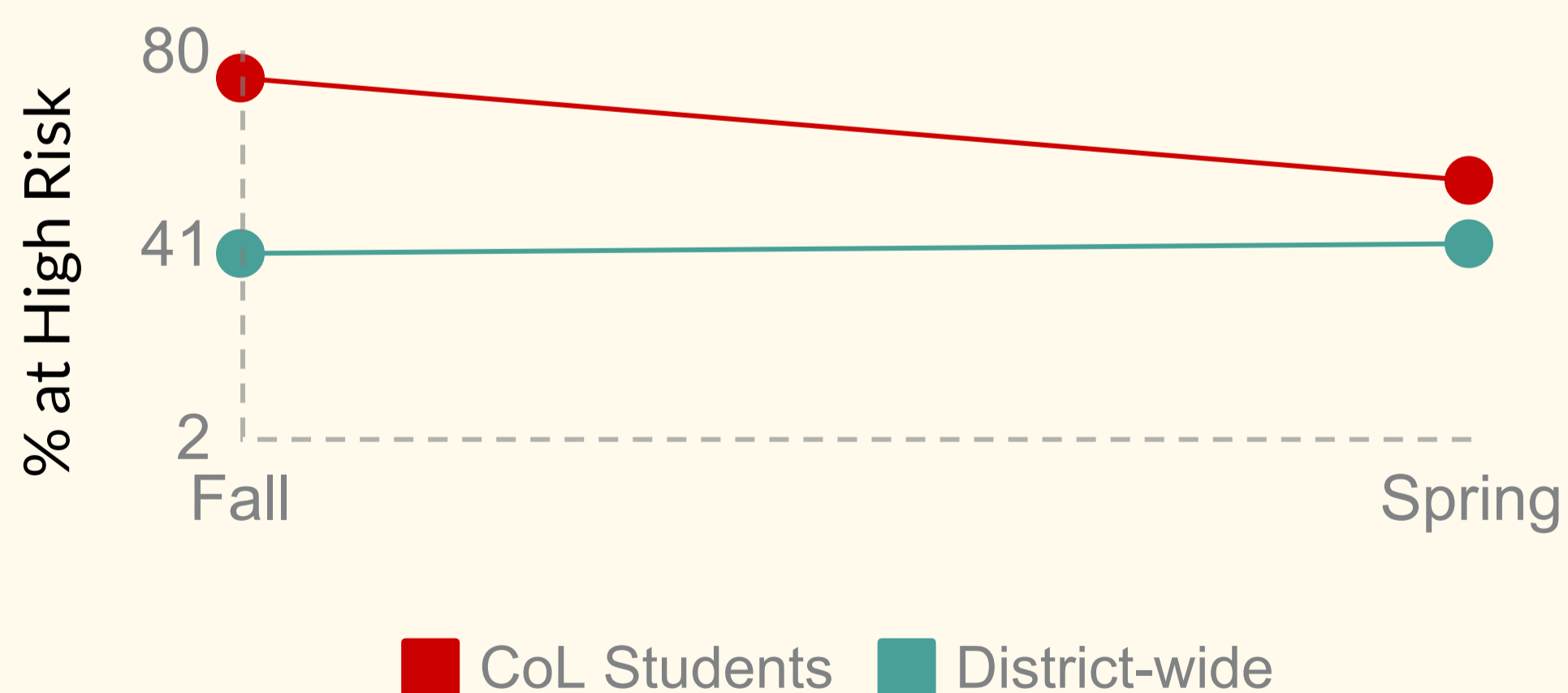
Teacher-Reported Impact on Student Engagement

2016-17 survey with 188 respondents



Impact

On the district's FAST assessment, the percentage of students at HIGH RISK for not meeting grade level standards by the end of the school year in Reading fell from 74% in Fall to 53% in Winter; meanwhile, District levels grew from 39% to 41%.



"Keylee has become more outgoing and eager to speak in front of class. She is enthusiastic about science and is persistent with her work even when it is difficult."
- Andersen teacher

2017-18 Sites

- Andersen (after school only)
- Anne Sullivan School
- Anthony Middle School
- Anwatin Middle School
- Hmong International Academy
- Justice Page Middle School
- Northeast Middle School
- Sanford Middle School
- Seward Montessori School

Strategy Alignment

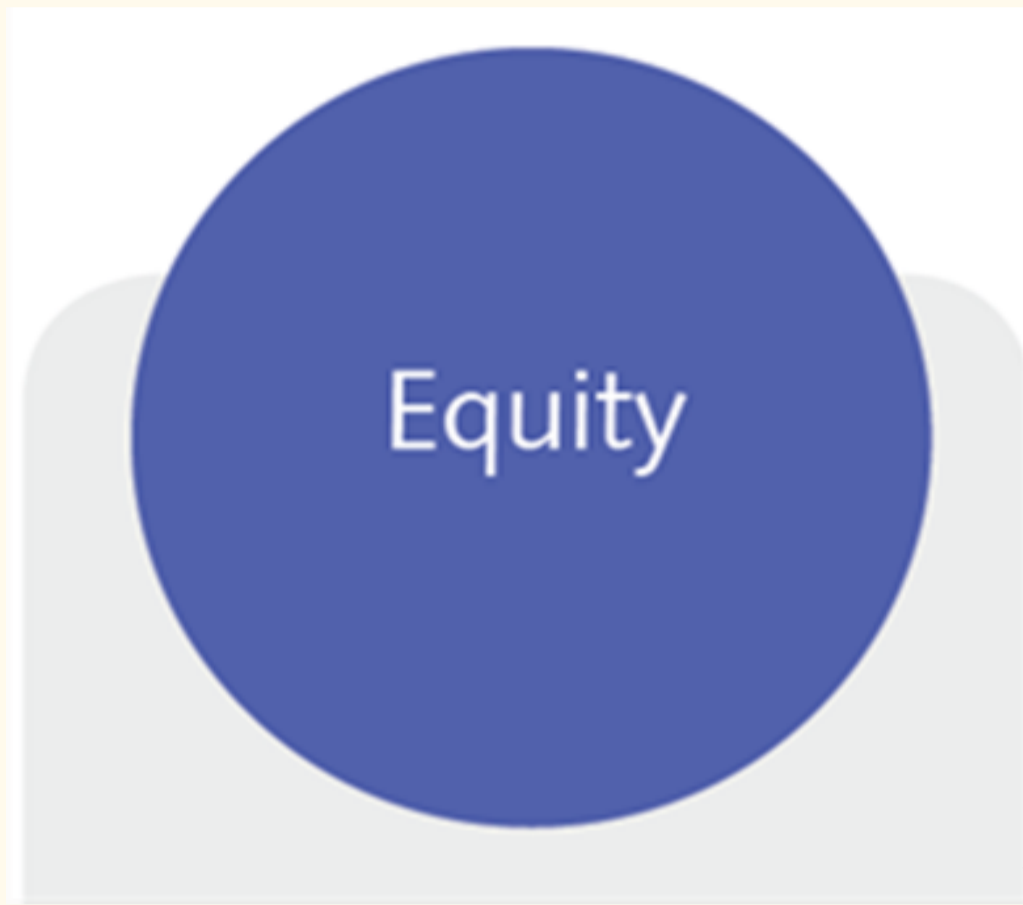
CoL utilizes routines from the English 3D curriculum, developed by Kate Kinsella, to meet key strategies for Improved Student Outcomes, including...

QUALITY CORE INSTRUCTION by providing explicit instruction in academic language and vocabulary while also supporting and reinforcing vocabulary and content knowledge in math and science, as well as other contents.

INCLUSION by supporting English Learners access to content within classroom, and working with small groups to support personalized learning opportunities.

CULTURALLY AND LINGUISTICALLY RESPONSIVE PRACTICES by supporting student engagement thru a relationship-based tutoring model and after school programs.

INNOVATION AND 21st CENTURY SKILLS by recognizing and utilizing students' home language as much as possible to encourage bilingualism.



CoL increases *opportunities and acceleration* for middle school Long-Term English Learners (LTELs)



158%

Average growth CoL students showed from pre- to post-test scores, meaning the average CoL student more than doubled their level of academic language skills over one school year.

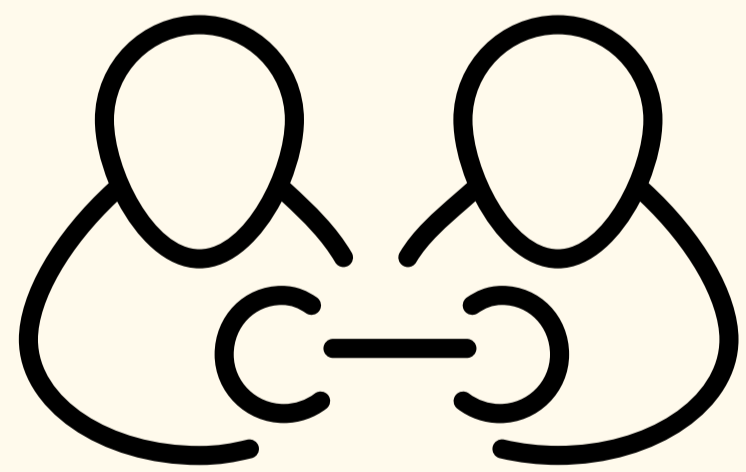
94%

of CoL students are eligible for free or reduced-price lunch

CoL focuses on students and families as partners in strengthening academic outcomes through regular, ongoing parent communication plus quarterly family nights.



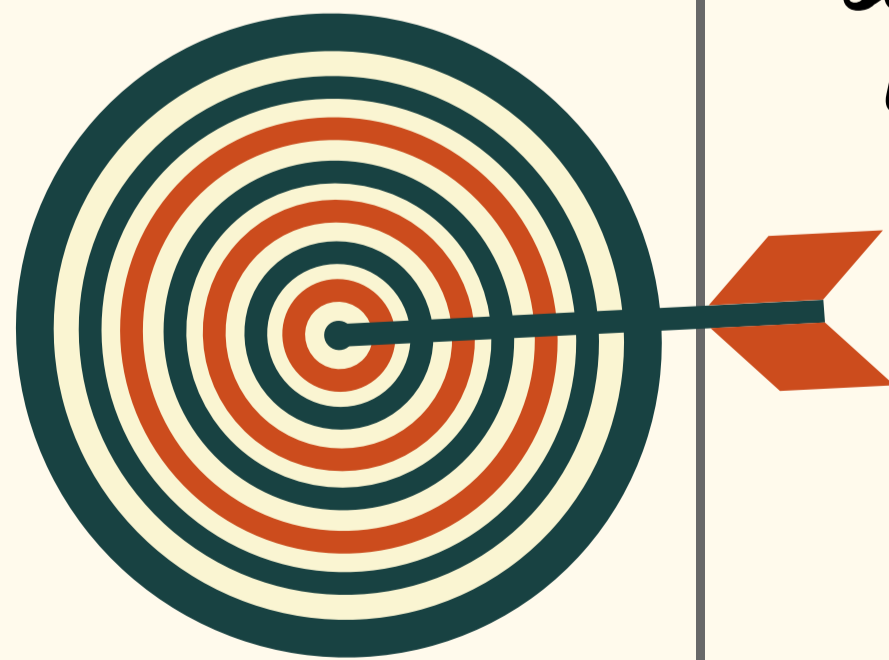
With approximately 33% of our alumni working within MPS after their term of service, and approximately half working in Education, CoL acts as a "pipeline" for experienced and qualified teachers and school staff.



614

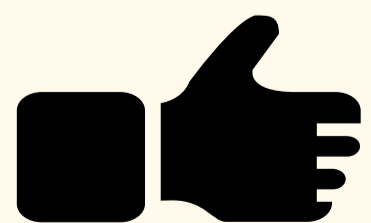
Number of total parent contacts members made during the 2016-17 school year

The GOAL of CoL's parent communication is to help parents feel more connected to their child's school, more likely to attend other school events, and more likely to reach out to their child's teacher with questions.



75% of alum said their experience in CoL directly informed their decision to seek work in their field.

Our yearly goal is to recruit at least **50%** of members who are bilingual



"[As a result of attending CoL family night], I feel very happy, or confident, that I can meet other parents and ask questions about the school."

"City of Lakes has greatly impacted many of my decisions. It reinforced my interest in education, while helping me understand the angle at which I wanted to approach it." ~ CoL Alum

